

Springfield High School

49 West Leamy Avenue
Springfield, PA 19064

ADMINISTRATION

Mr. Joseph Hepp, *Principal*
Mrs. Monica Conlin, *Assistant Principal*
Mr. Richard Mitchell, *Assistant Principal*

COUNSELING DEPARTMENT

Kendra Campbell, *College Counselor*
Kim Romasko, *Admissions Assistant*
Kelly Pedrotty, *A-DE*
Hilary Campbell, *DF-KE*
Jamie Weaver, *KF-PH*
Jessica Houser, *PI-Z*



DISTRICT ADMINISTRATION

Dr. Anthony Barber, *Superintendent*
Ms. Cynthia Mattei, *Director of Teaching & Learning, Elementary*
Mr. Jeffrey Zweiback, *Director of Teaching & Learning, Secondary*
Mr. Don Mooney, *Executive Director of Operations*
Dr. Kristin Nash, *Director of Special Education*

MISSION

Standing as a cornerstone of the Springfield and Morton Communities, we are committed to excellence in all dimensions of student life. Through dynamic, diverse and innovative programs, we empower our students to achieve their individual potential and inspire them to become ethical and contributing citizens.

HISTORY

Springfield High School serves the communities of Springfield Township and Morton Borough. These adjacent mixed suburban communities are located in Delaware County, twelve miles southwest of Philadelphia. Springfield High School graduated its first class in 1935 and is a comprehensive high school with a strong academic tradition. The high school serves approximately 1200 students grades 9-12. Our senior class has 327 students this school year. The combined enrollment of Springfield School District is 4033.

VISION

Springfield High School is committed to providing the students of the Springfield and Morton communities with the educational and social experiences necessary to achieve their goals and aspirations; for each student to be college ready and equipped with the skills and knowledge to be successful in their post-secondary endeavors.

COMMUNITY

The Springfield community is a working class community that consists of students, parents and faculty who are extremely invested in the schools. Many of our families have lived in Springfield for several generations and value tradition. Despite the strong emphasis that our school and community place on education, only about 33% of our students' parents have a college degree. Many of the students are the first in their family to attend college. Our current student population is 82% Caucasian, 7% African American, 7% Asian, 1% Hispanic or Latino, and 3% Multi-Racial. 21% of the Springfield High School student body receives free or reduced lunch.

FACULTY

There are 88 full-time faculty members with two-thirds of the faculty having 10 years or more of teaching experience. Additionally, over 78.4% of the faculty holds advanced degrees, including 3 teachers who hold doctorates.

ACCREDITATION & MEMBERSHIP

Springfield High School is accredited by the Middle States Association of Colleges and Secondary Schools and The Pennsylvania Department of Education. Springfield is a voting member of the National Association of College Admission Counselors.

RECOGNITION

Washington Post, "America's Most Challenging High Schools" - ranked 1,944 Nationally
Newsweek, "America's Top High Schools" - ranked 244 Nationally, 2nd in the County and 17th in the State
The Daily Beast, a subsidiary of Newsweek, "America's Top High Schools" - ranked 332 Nationally and 5th in the County
Philadelphia Magazine, "Philadelphia's Best High Schools" - ranked 46 in Pennsylvania

DISCIPLINE DISCLOSURE STATEMENT

Springfield will not report disciplinary action on a college's Secondary School Report or the Common Application's Secondary School Report.

Contact Information

Main Office Phone: (610) 938-6100
Guidance Phone: (610) 938-6130

Contact Information

www.ssdcougars.org
CEEB Code: 394660

Springfield GRADUATING CLASS		2014	2015	2016
ACT Composite		20.7	21.8	22.7
SAT Mean Critical Reading		507	490	503
SAT Mean Math		534	527	528
AP Results:	# of Exams	481	466	547
	Areas	17	17	19
	Scores of 3+	72.6%	70.8%	72.2%
Total AP Scholars		34 AP Scholars 17 Scholars with Honors 24 Scholars with Distinction 6 National Scholars	30 AP Scholars 6 Scholars with Honors 26 Scholars with Distinction 4 National Scholars	43 AP Scholars 19 Scholars with Honors 23 Scholars with Distinction 6 National Scholars
National Merit Scholarship Recipient			1	
National Merit Finalist		1	1	1
National Merit Commended Students			1	5
National Merit Special Scholarship			1	
National Achievement Semifinalists			1	
National Hispanic Recognition Program			1	
Attendance Rate		92.99%	93.21%	94.62%
% attending	4 Year	70%	69%	71.9%
Post-secondary	2 Year	24%	24.6%	21.5%
Education	Technical	2%	2.8%	2.2%
	Military	1%	2.1%	1.9%

School Calendar: September 6, 2016-June 16, 2017

2015 and prior: Two semesters, nine week quarters. Hybrid Schedule with 93 minute blocks and 45 minute periods.

2016 – present: Two semesters, seven periods, 55 minutes each

GRADING SYSTEM (Grade Point Average)

GPA is calculated and reported using a \pm 100% scale. Grades earned in Honors courses receive an additional 1.125 percent weight and Advanced Placement courses receive an additional 1.25 percent weight.

In determining class rank, all courses receiving credit are included. Grade Point Average determines the exact rank.

GRADING SCALE: A=90-100; B=80-89; C=70-79 D=60-69; F=0-59

Graduation Requirements - Class of 2016

English	4 credits
Math	3 credits
Science	3 credits
Social Studies	3 credits
Foreign Language	2 credits
Health/PE	2 credits
Personal Finance	0.5 credits
Electives	8.5 credits

Highest Course Information

English— Honors Language Arts I; Honors Language Arts II; AP English Language & Composition; AP English Literature & Composition

Math— Honors Algebra II; Honors Geometry; Honors Functions, Statistics & Trigonometry; Honors Pre-Calculus and Discrete Math; Honors Pre-Calculus (as of 15-16 school year, this has replaced FST and PDM); Honors Calculus; AP Statistics; AP Calculus AB and BC; Calculus C (students who completed AP Calculus AB).

Science— Honors Biology; AP Chemistry; AP Biology; AP Environmental Science; AP Physics I; AP Physics II; AP Physics C: Mechanics

Social Studies— Honors American History I; AP United States Government & Politics; AP United States History; AP European History; AP Psychology; AP Human Geography

World Language— French III; German III; AP Spanish Language & Culture

Business— AP Microeconomics, AP Computer Science

Music and Art— Honors Orchestra (assigned after graduation); AP Music Theory; AP Studio Art 2D; AP Studio Art: Drawing

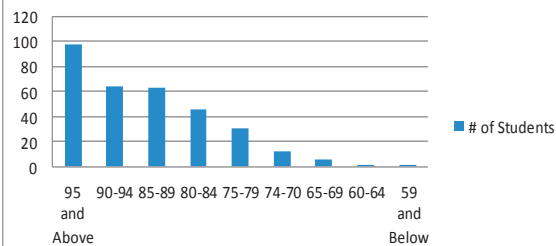
Other Noteworthy Courses

College Courses may be taken by qualified students and are marked on the transcript as college courses.

The Industrial Materials program at Springfield is internationally recognized and prides itself on teaching creativity and problem solving through woodworking. Student work has been featured in national woodworking magazines over 30 times and can be found at www.ssdougars.org/webpages/etrout.

Honors Medical Technology is a Delaware County Intermediate Unit technical education program. It is a selective opportunity for highly qualified seniors who are interested in the healthcare industry to complete clinical rotations and biomedical coursework with Crozer Keystone Health Systems.

Grade Distribution for the Class of 2017



Over 97% of Springfield graduates matriculate to a Post-secondary Education. Some of the colleges and universities the class of 2016 matriculated to include:

Pennsylvania State University	Temple University
University of Pennsylvania	Widener University
Spelman University	Seton Hall University
St. Joseph's University	Moravian College
University of Colorado, Boulder	Howard University
Carnegie Mellon University	Drexel University
University of Pittsburgh	Scripps College
St. John's University	Rowan University
The University of Alabama	Illinois State University
Georgetown University	The Art Institute
Loyola University	La Salle University
The University of Scranton	Boston College
University of the Sciences	Full Sail University
Northeastern University	Haverford College
Purdue University	Elizabethtown College
University of California, Santa Cruz	Lehigh University
The Culinary Institute of America	Arcadia University
Coastal Carolina University	Villanova University
University of Illinois	Rutgers University
Williamson Free Trade School	American University