

Leamy Avenue Scheme PHASE 1

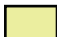



Demolish District Admin Wing



Construction of New Facilities Maintenance Building and Renovation of Two Tennis Courts **7,000 GSF**

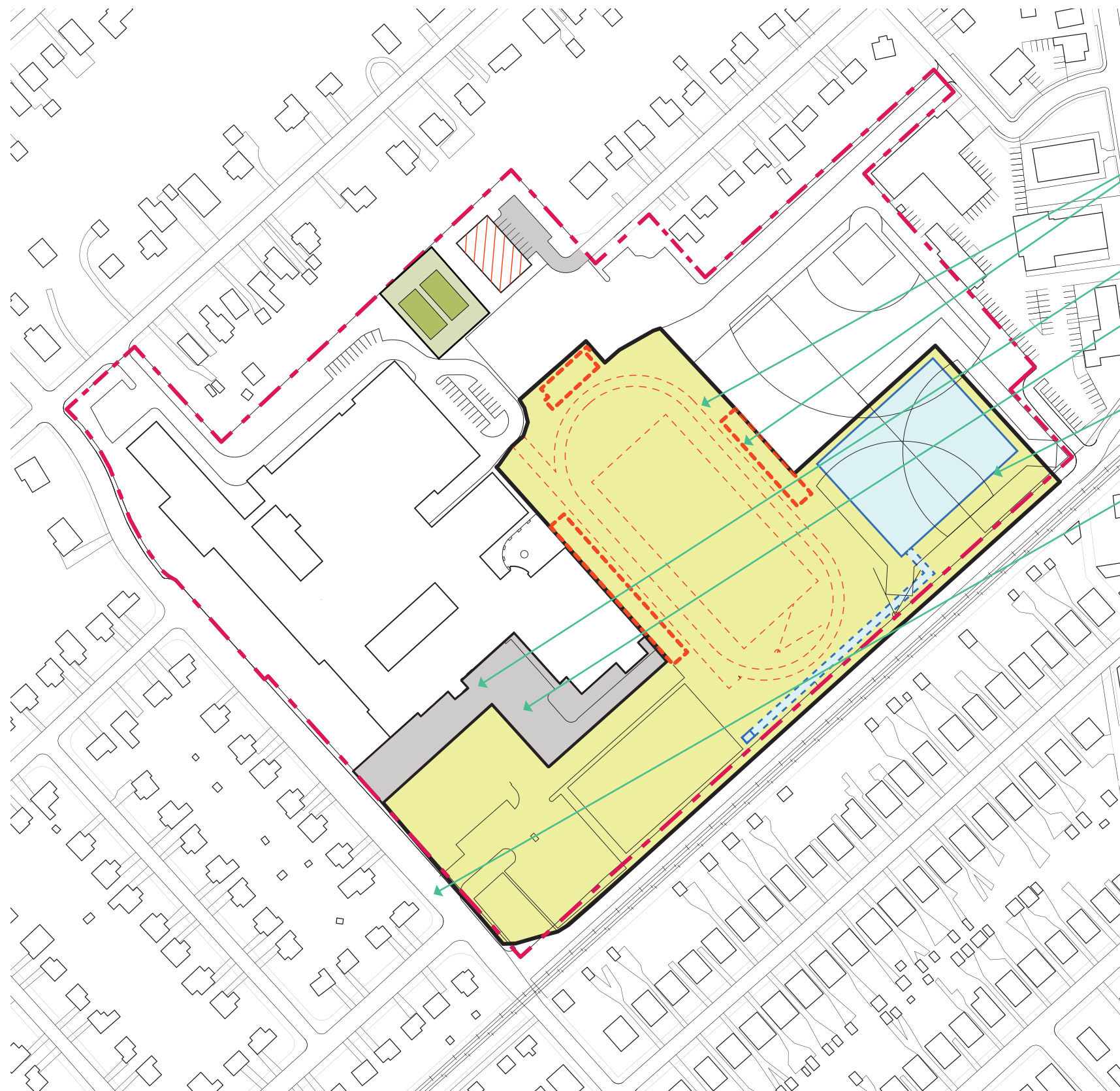
Loading Access Maintained

Demolition of Existing Distr. Admin. Office and Regrading to Allow for Temp. Loading **35,800 GSF on 2 Stories**

-  Construction Area **98,600 GSF**
-  Renovation Area
-  Parking / Service Area
-  New Construction

Leamy Avenue Scheme PHASE 2

Wellfield Installation and Site Preparation



Demolition of Existing Track & Field, Bleachers and Grounds Building 17,900 GSF

Temporary Utility Connections

Loading Dock and Safe P.E. Access Maintained Adjacent to Construction Area

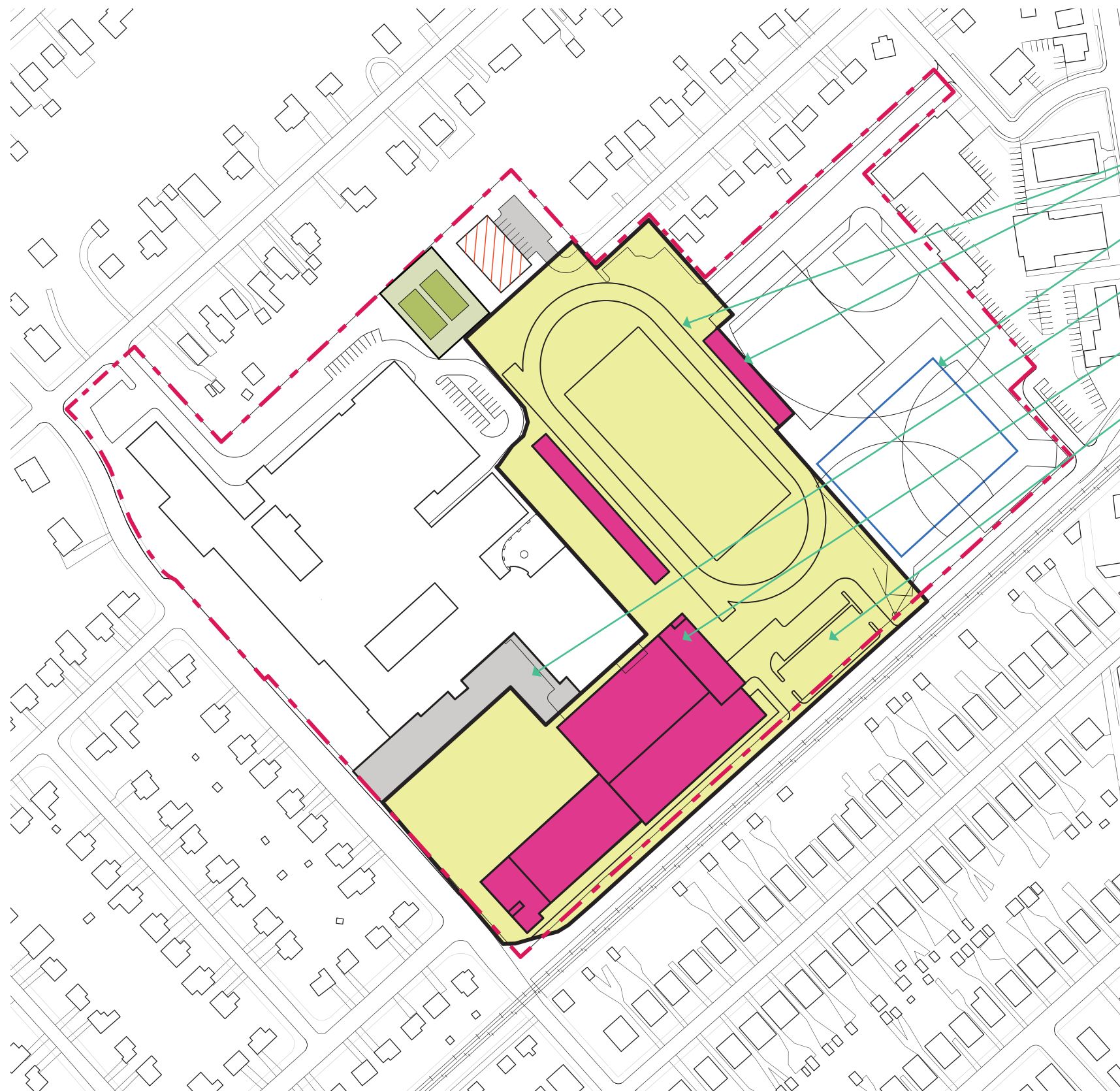
Installation of Geo-Exchange Wellfield / Connections and Restoration of Field

New Utility Connections for New School

- Construction Area 441,000 GSF
- New Utility Connection
- New Geo-Exchange Wellfield and Connections
- Renovation Area
- Parking / Service Area

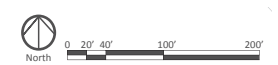
Leamy Avenue Scheme PHASE 3

Construct Academic Support Wing



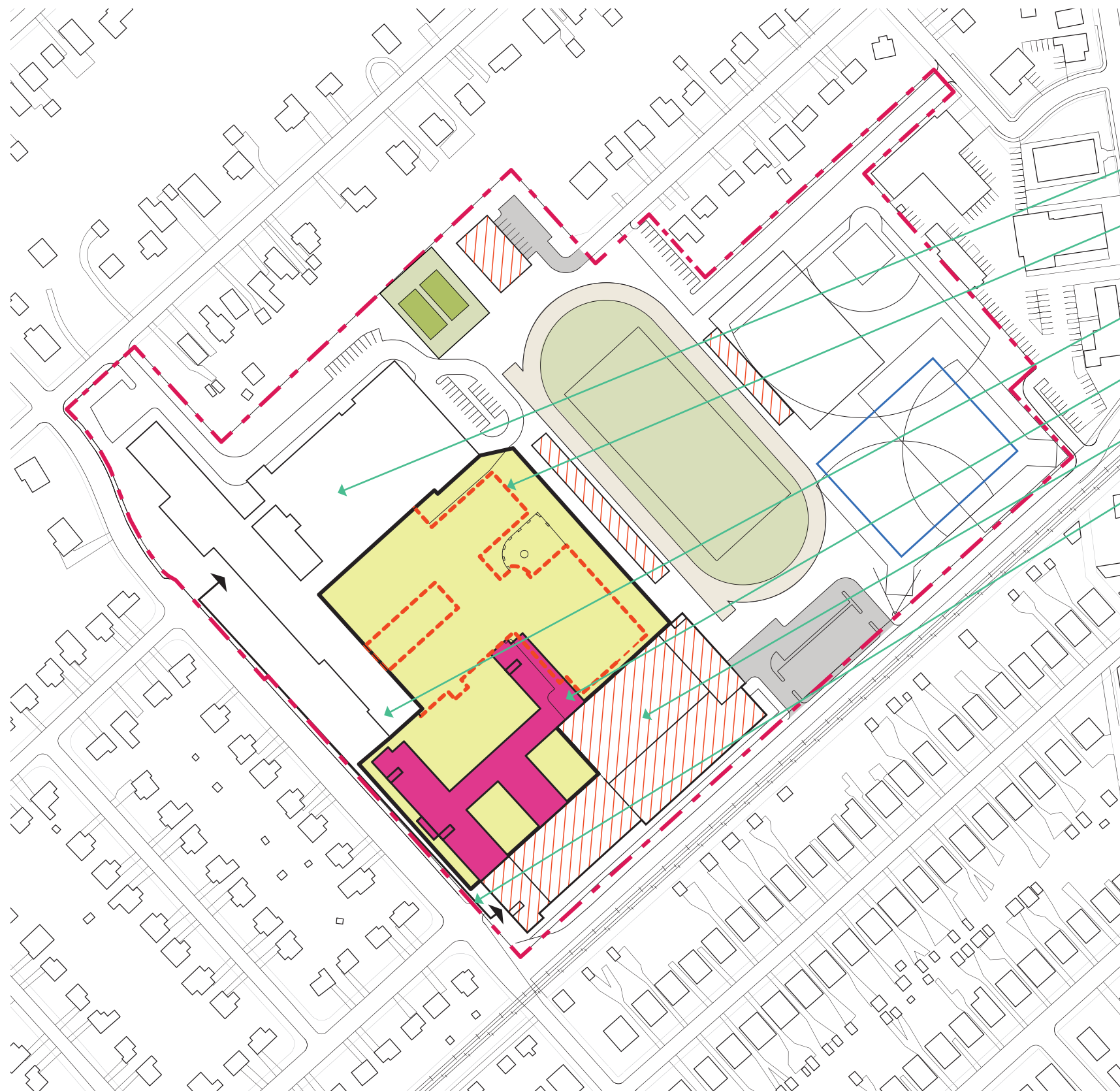
- Construction of New Track & Field and Bleachers 14,300 GSF
- Wellfield
- Loading Access Maintained
- Construction of New Academic Support Wing 102,600 GSF on 3 Stories
- Construction of New Parking

- Construction Area 438,600 GSF
- New Construction
- Parking / Service Area



Leamy Avenue Scheme PHASE 4

Construct Academic Wing

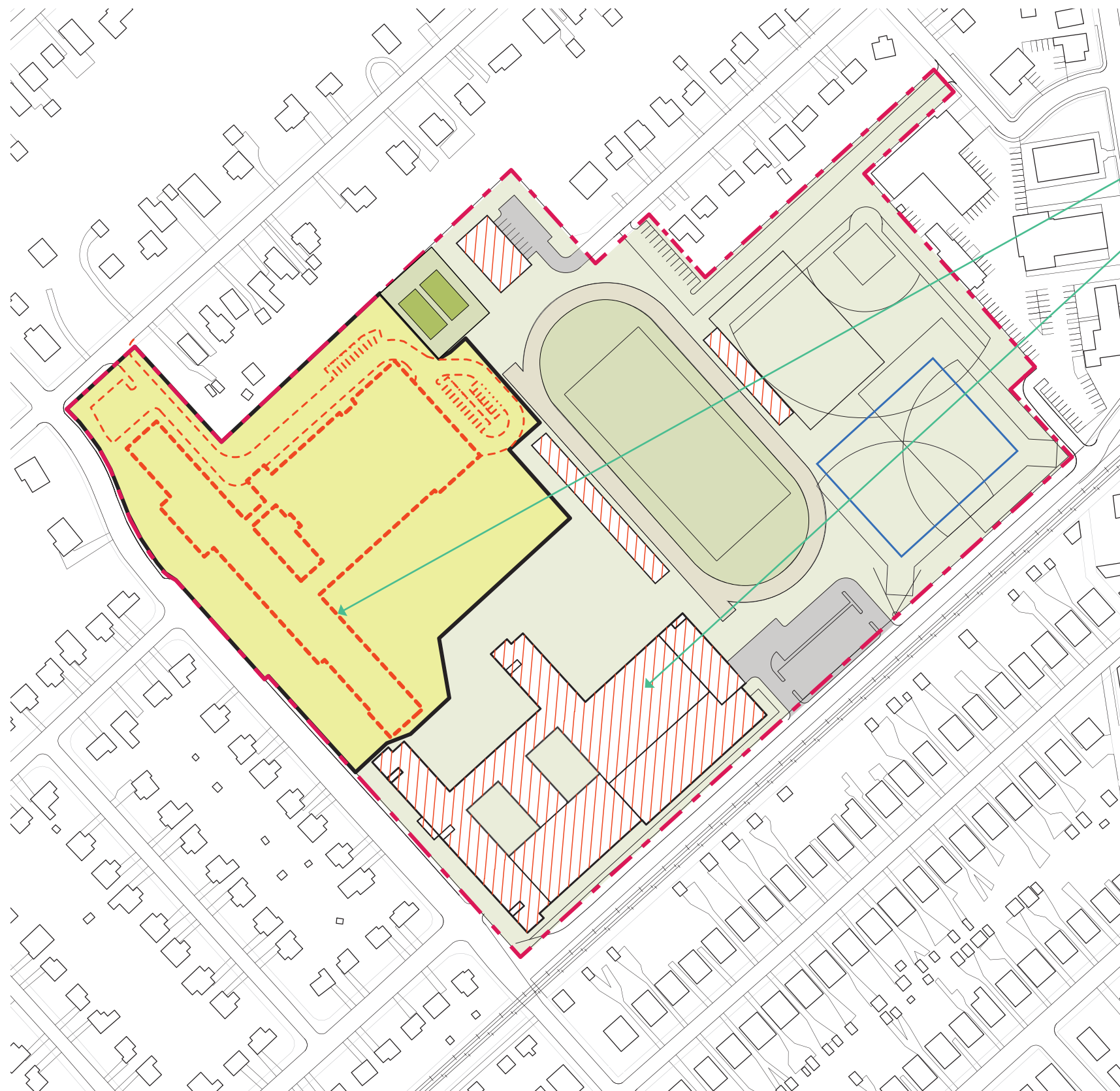


- Academic Wings Remain in Use
- Demolition of H.S. Academic Support Spaces :
Auditorium, P.E. Dining, and Arts 104,800 GSF on 2 Stories
- Temporary Utilities and Systems Remain in Operation
- Construction of Academic Wing 114,900 GSF on 3 Stories
- Completed Academic Support Wing
- Pedestrian Access Maintained between Existing and New

- Construction Area 207,200 GSF
- Renovation Area
- Renovation Completed
- New Construction

Leamy Avenue Scheme PHASE 5

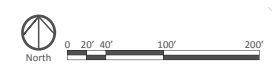
Complete School Demolition



Demolition of Existing School 170,400 GSF on 2 Stories

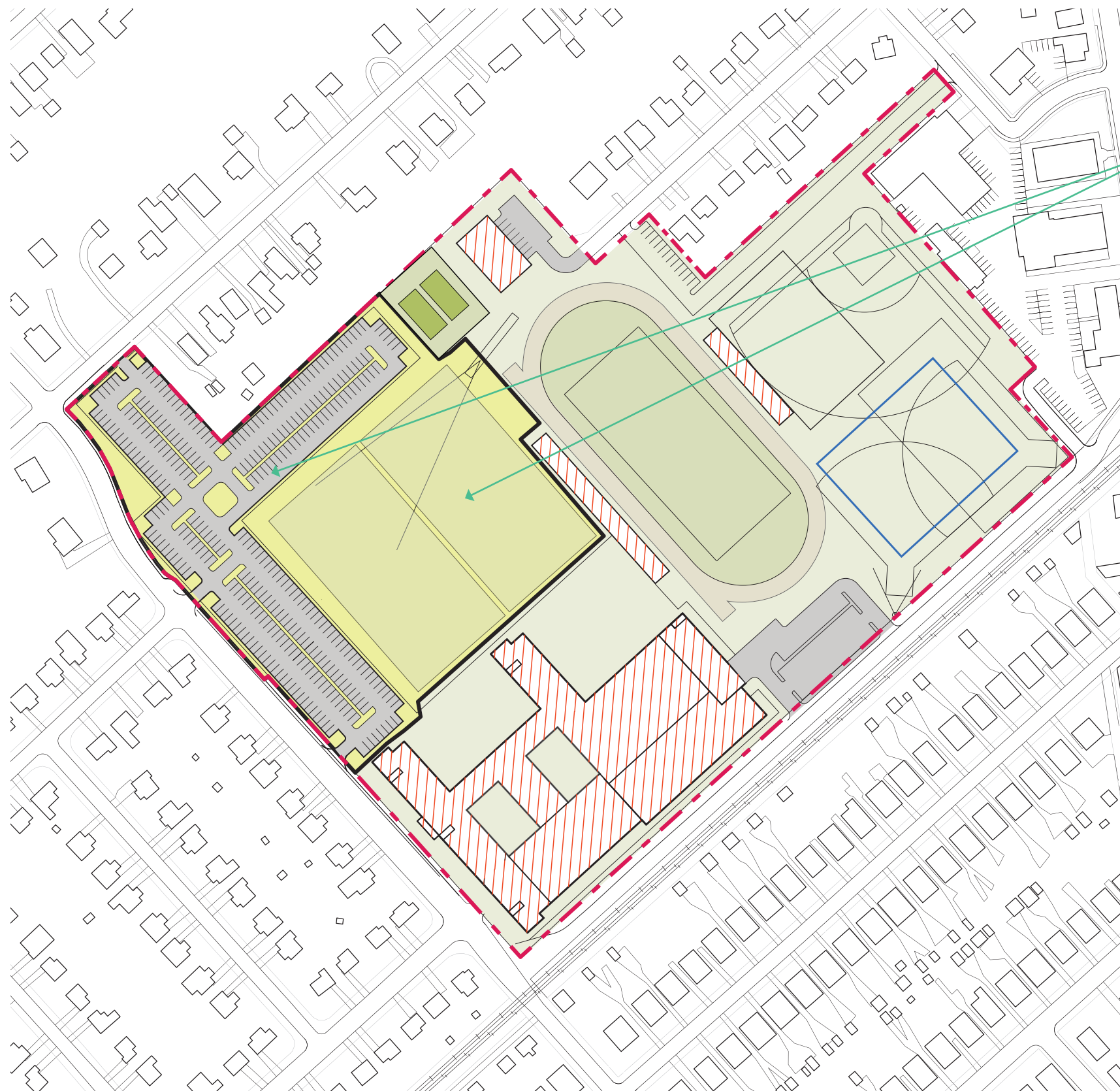
Completed New High School in Operation

- Construction Area 311,600 GSF
- Renovation Area
- Renovation Completed



Leamy Avenue Scheme PHASE 6

Complete Site Improvements

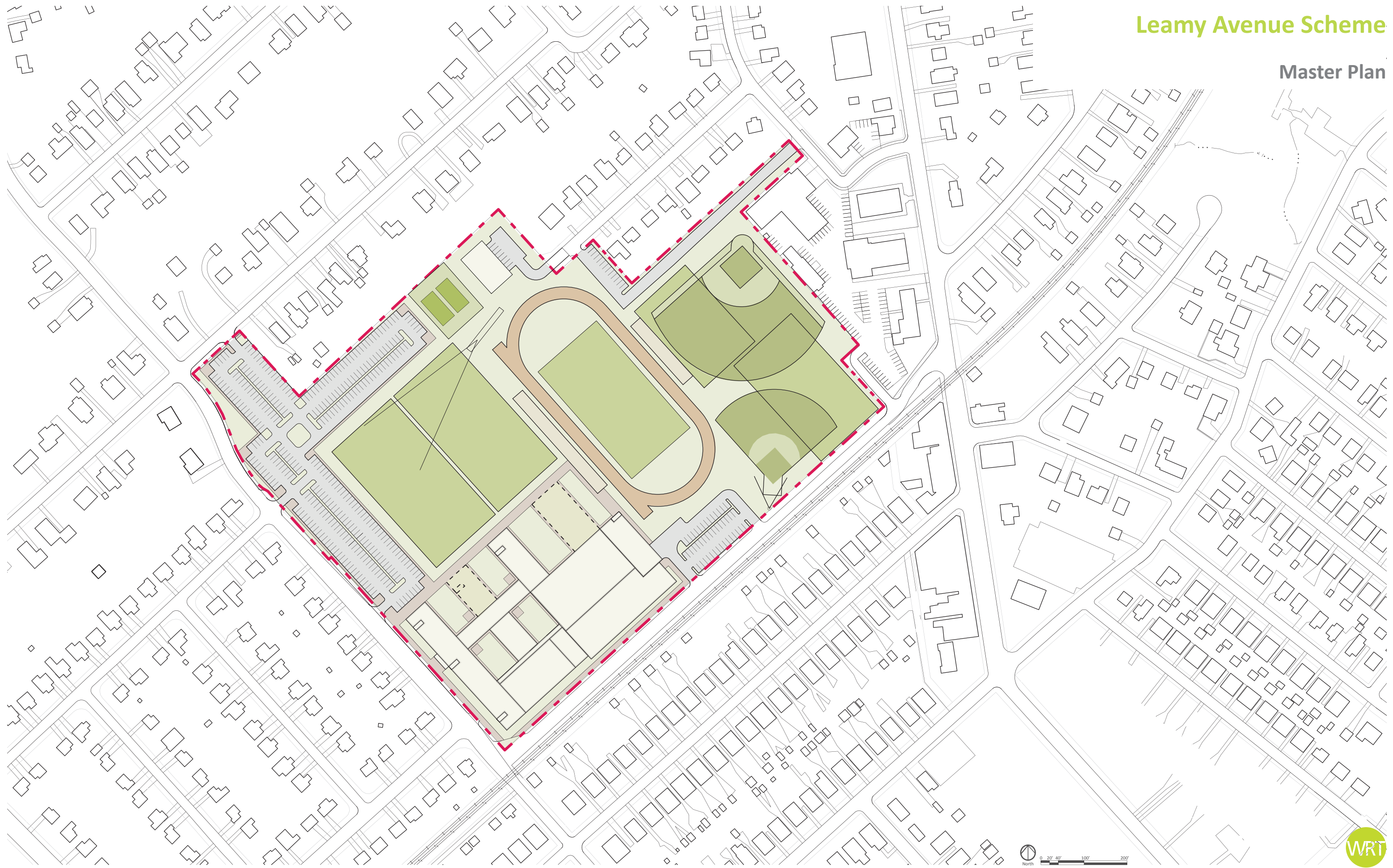


Final Site Improvements : Fields and Parking

-  Construction Area 330,500 GSF
-  Renovation Completed

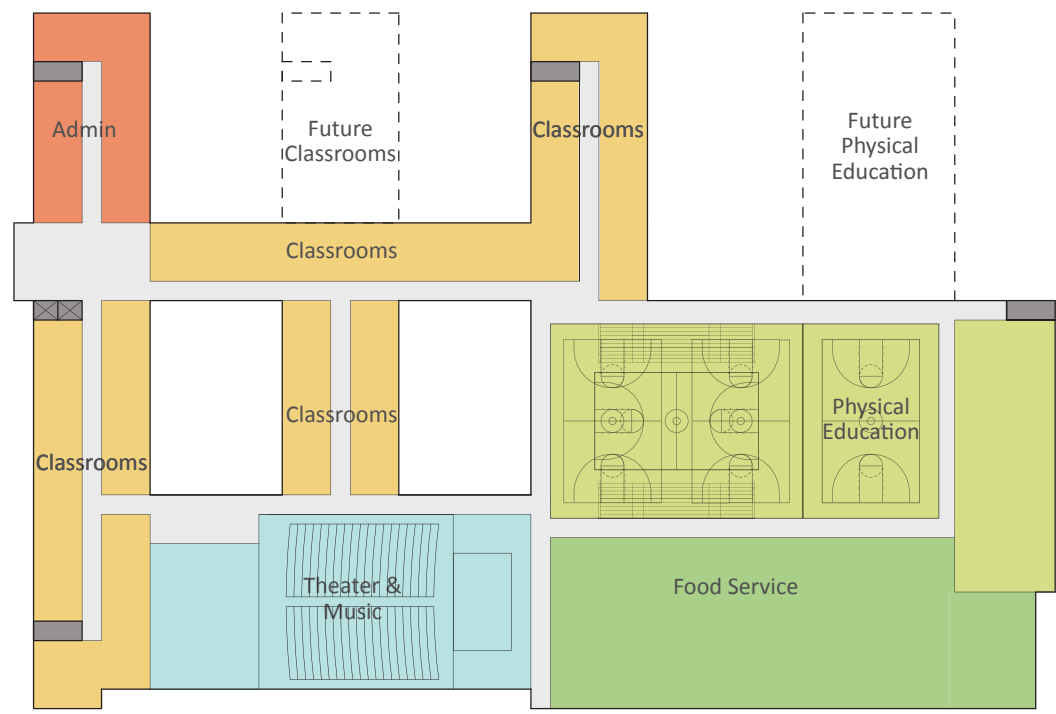
Leamy Avenue Scheme

Master Plan

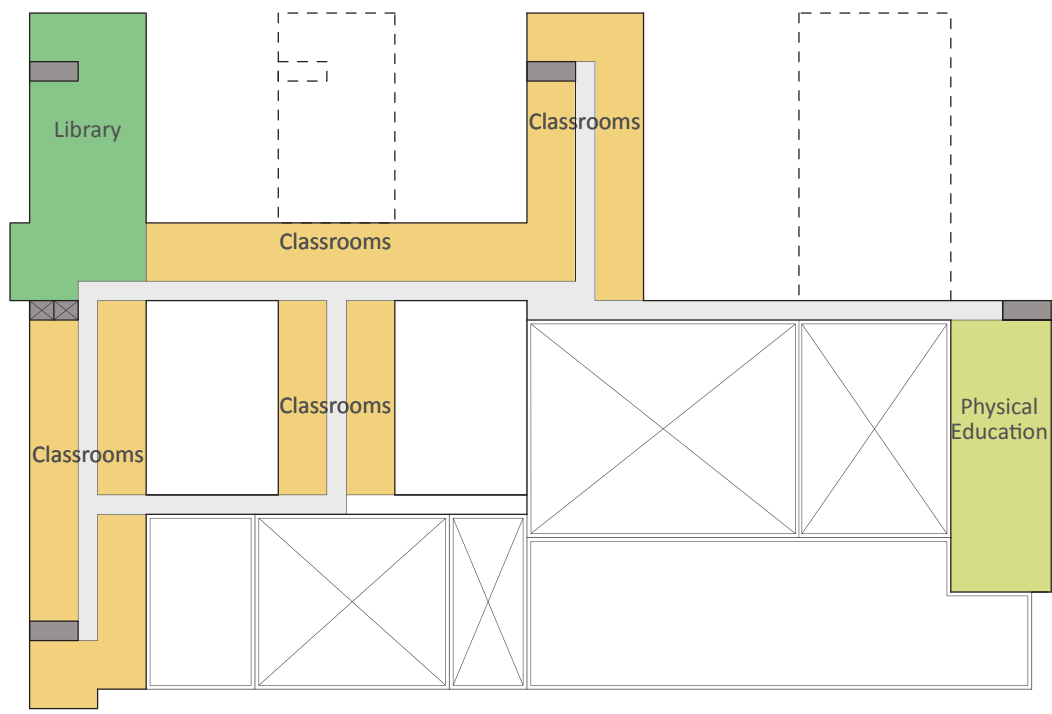


Leamy Avenue Scheme

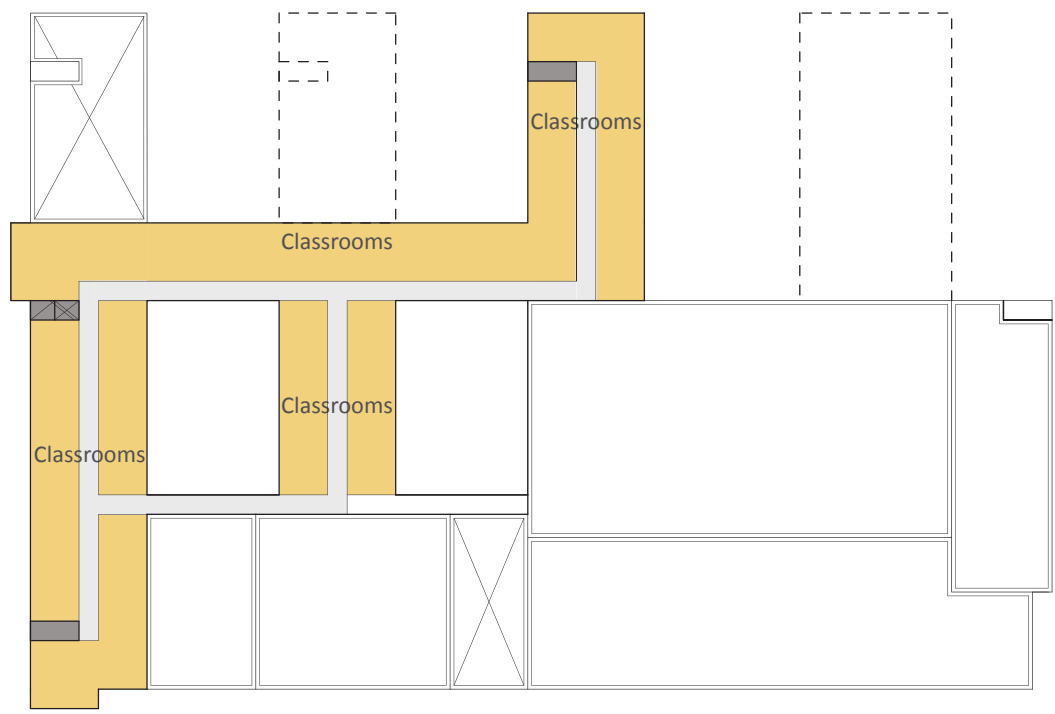
Floor Plans



First Floor



Second Floor



Third Floor

North

- Classrooms
- Theater & Music
- Physical Education
- Food Service
- Administration
- Library
- Corridors
- Stairs / Elevators
- Future Building