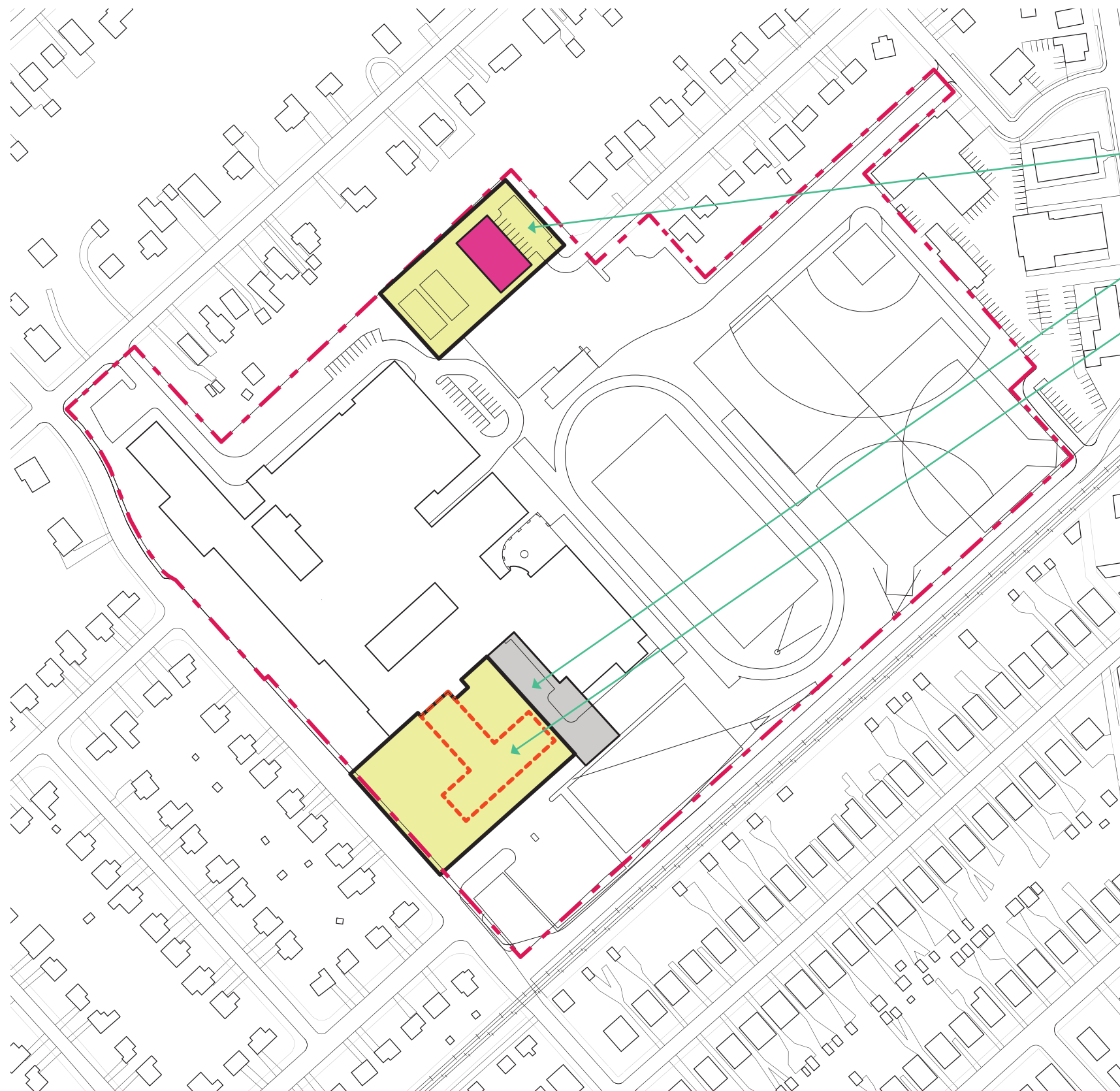


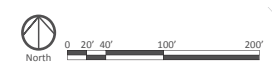
Saxer Avenue Scheme PHASE 1

Demolish Distr. Admin. Wing



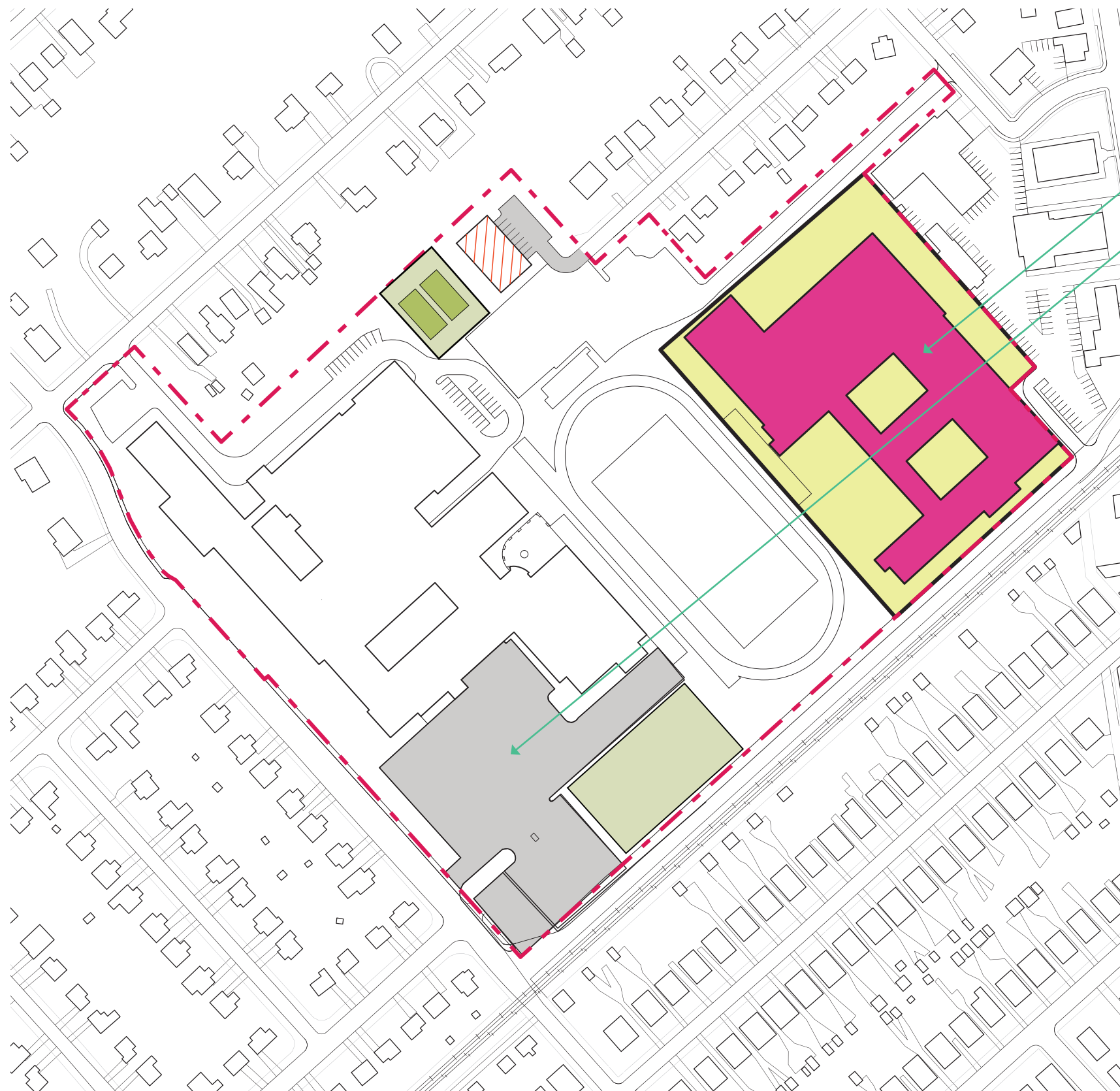
- Construction of New District Maintenance and Grounds Building
Restoration of Two Tennis Courts 7,000 GSF
- Loading Access Maintained
- Demolition of Existing Distr. Admin. Office and
Regrading to Allow for Temp. Loading 35,800 GSF on 2 Stories

- Construction Area 98,600 GSF
- Renovation Area
- Parking / Service Area
- New Construction



Saxer Avenue Scheme PHASE 2

New High School Construction Start



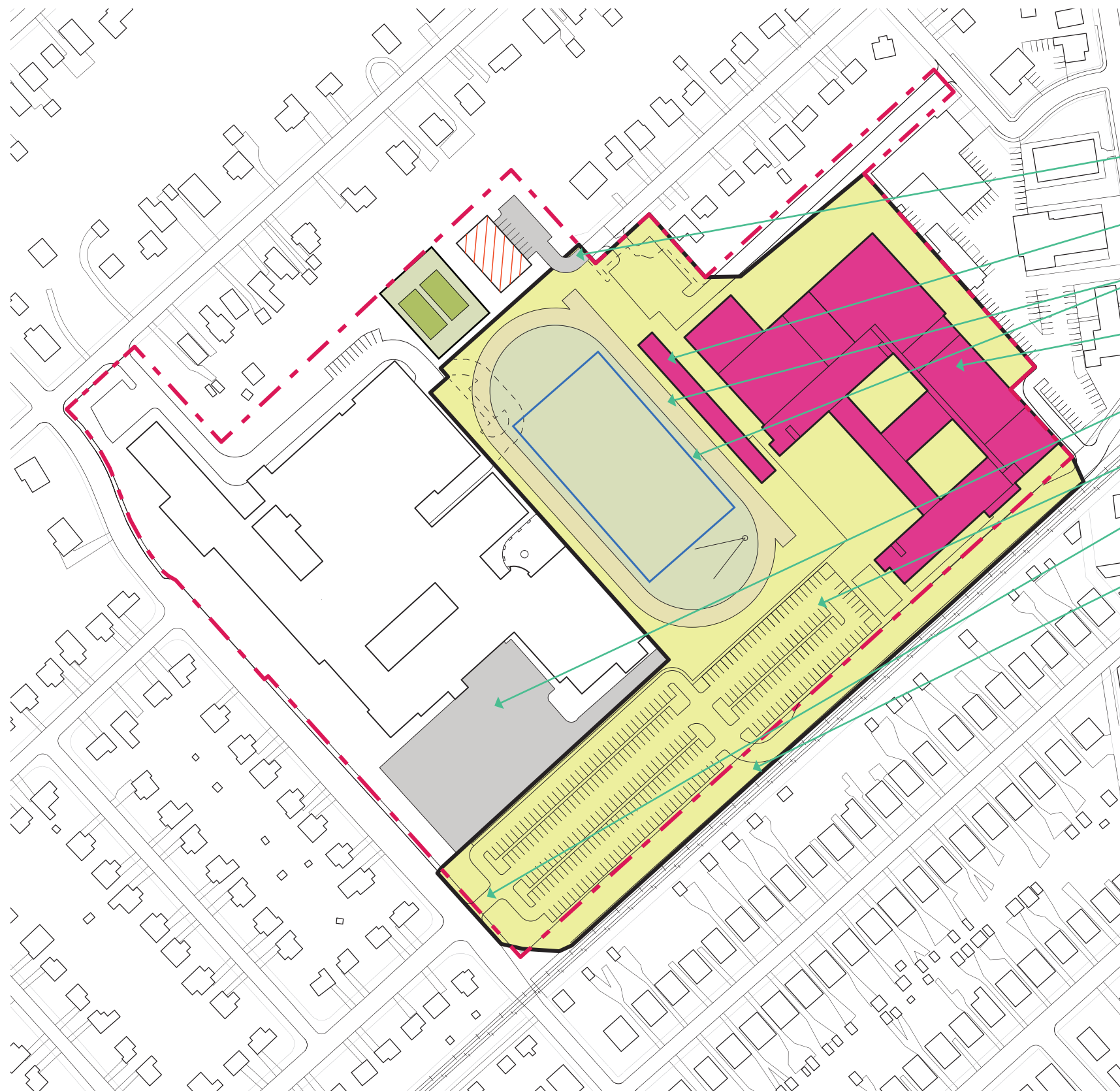
Construct New High School 224,700 GSF

Temporary Parking Area

- Construction Area 238,700 GSF
- New Construction
- Parking / Service Area

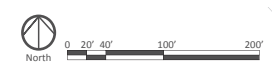
Saxer Avenue Scheme PHASE 3

New High School Construction Completion



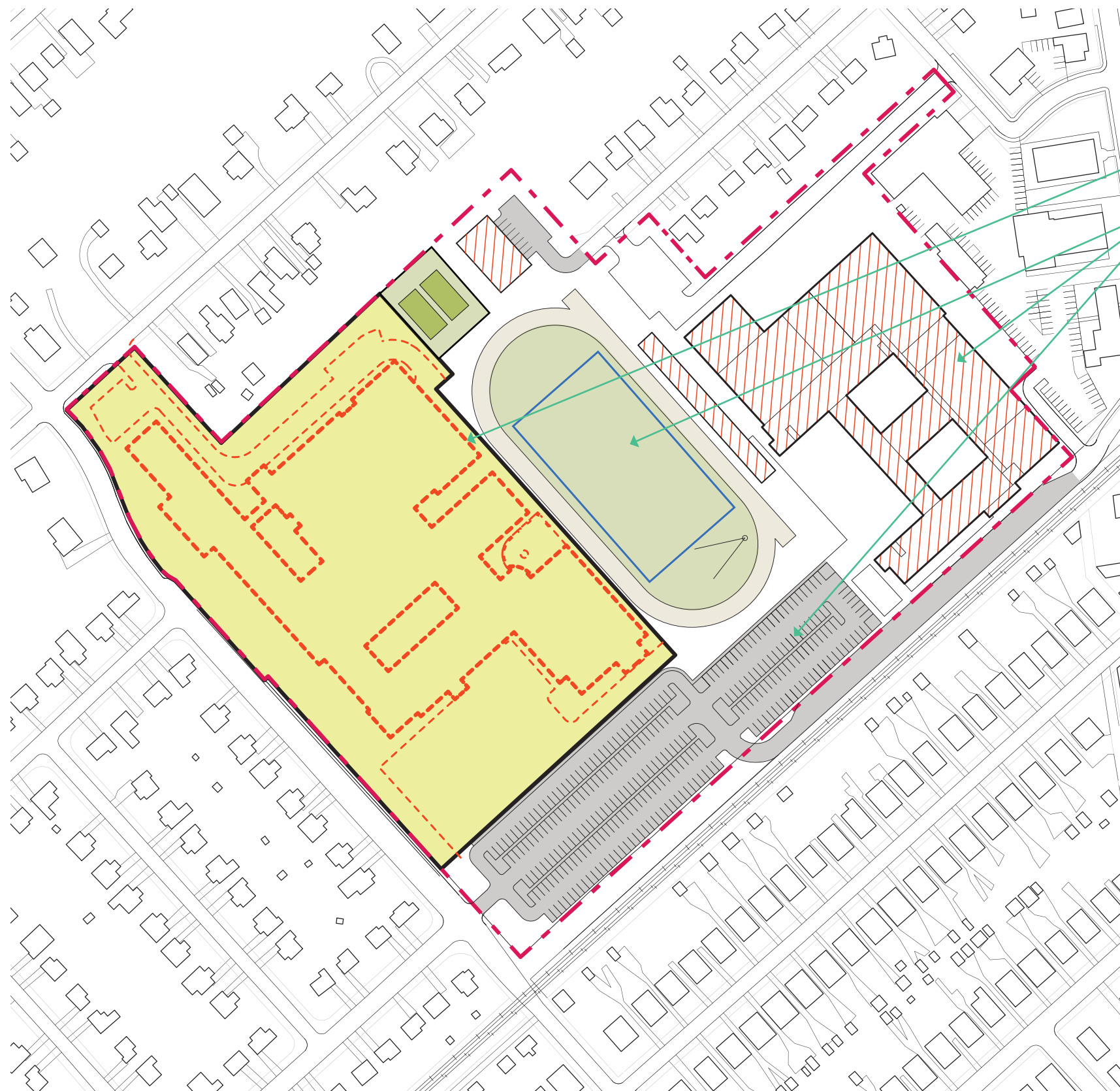
- Maintain Access for Maintenance Building
- New Bleachers Storage Below Seating 8,900 GSF
- New Track & Field and Wellfield
- High School Construction Ongoing 224,700 GSF
- Temporary Parking and Loading Dock Access
- New Parking Lot Construction
- New Curbcut/Entry to Site
- Rolling Road Closed

- Construction Area 650,000 GSF
- New Construction
- Parking / Service Area



Saxer Avenue Scheme PHASE 4

Demos of Existing High School



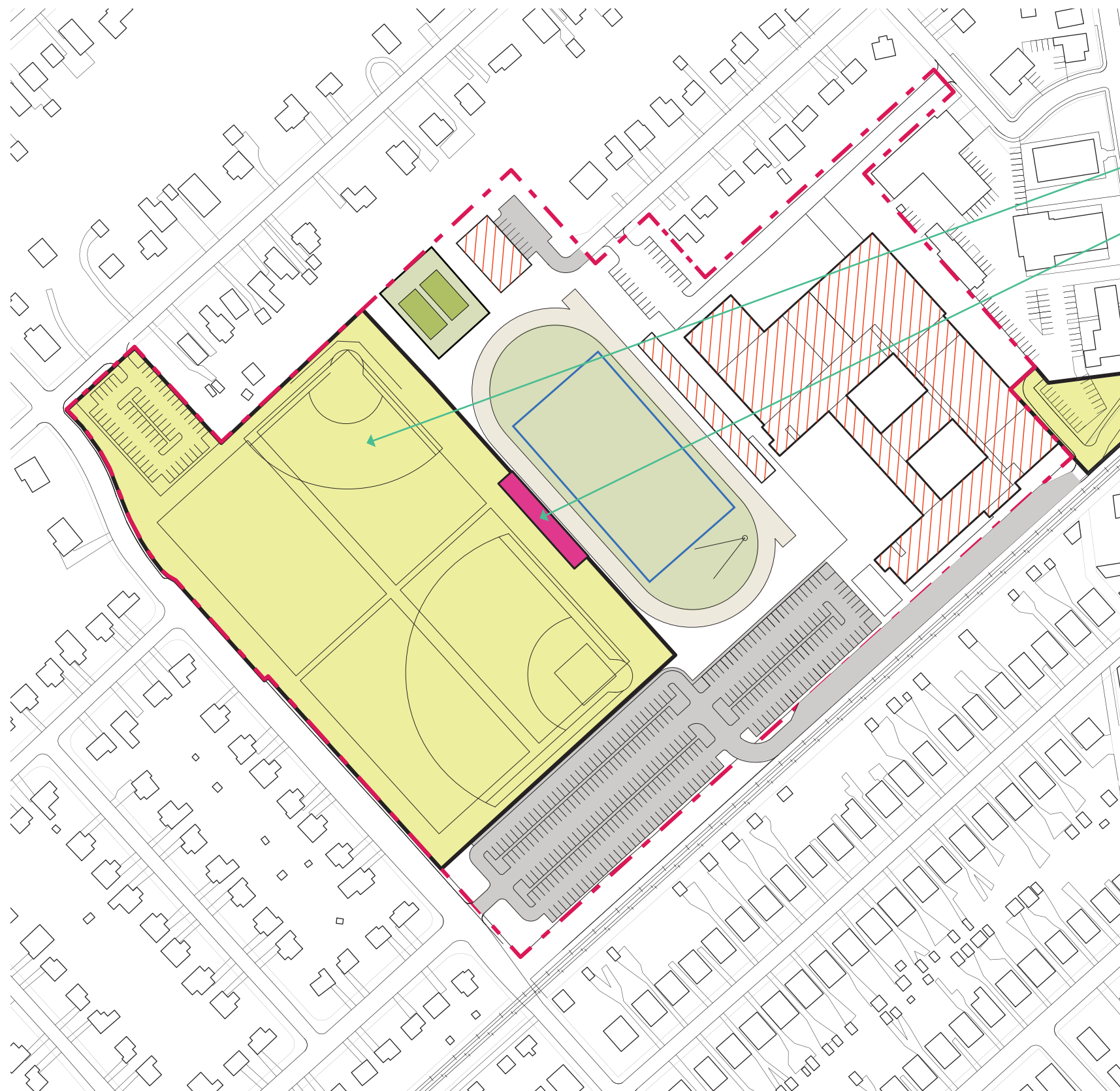
Demolition of Existing High School 251,800 GSF

New High School, Field and Parking in Operation

- Construction Area 415,200 GSF
- Renovation Area
- Renovation Completed
- Parking / Service Area

Saxer Avenue Scheme PHASE 5

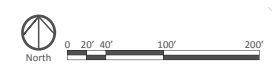
Final Site Improvements

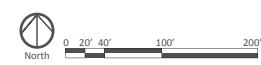
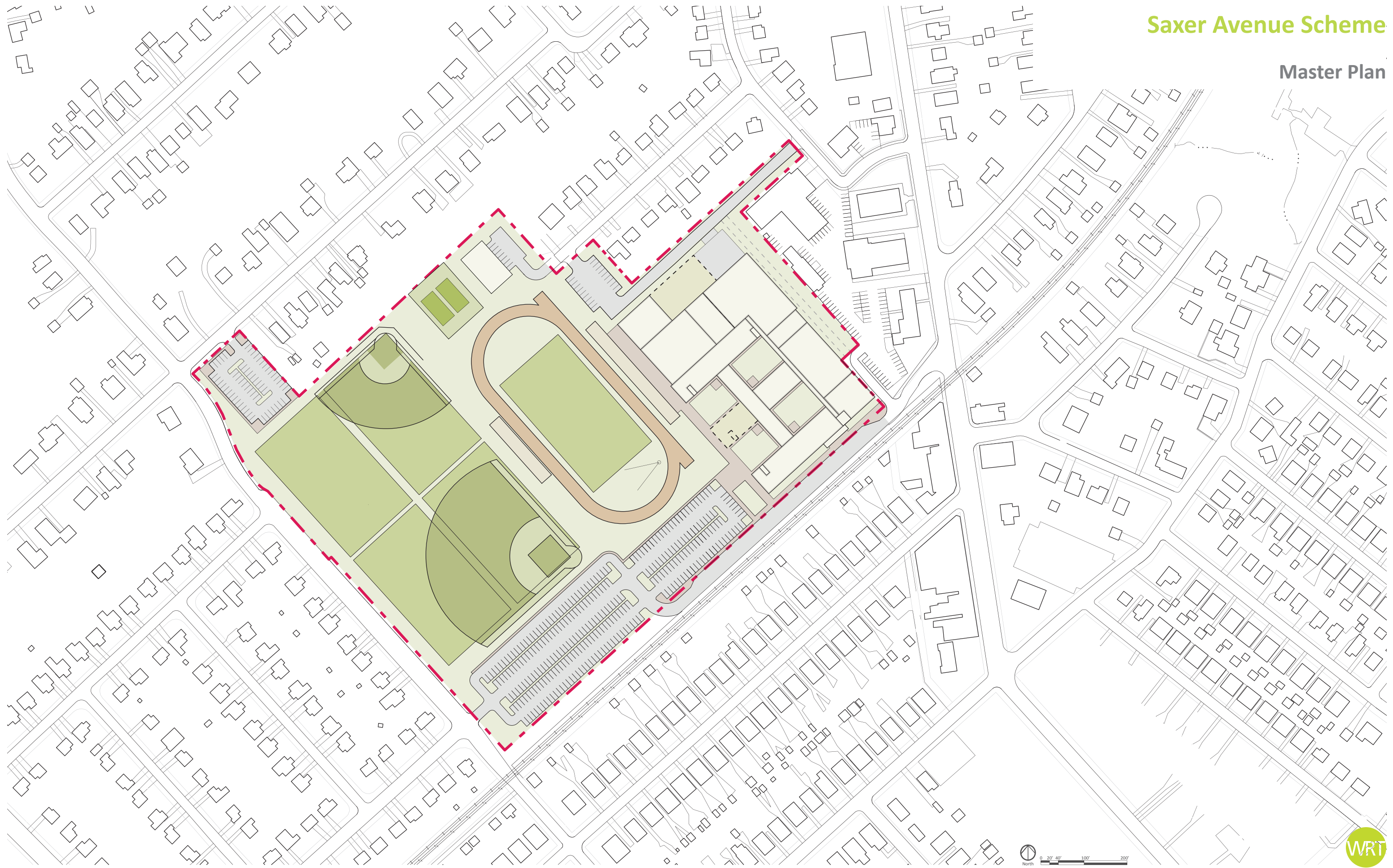


Final Site Improvements

New Visitors Bleachers 5,500 GSF

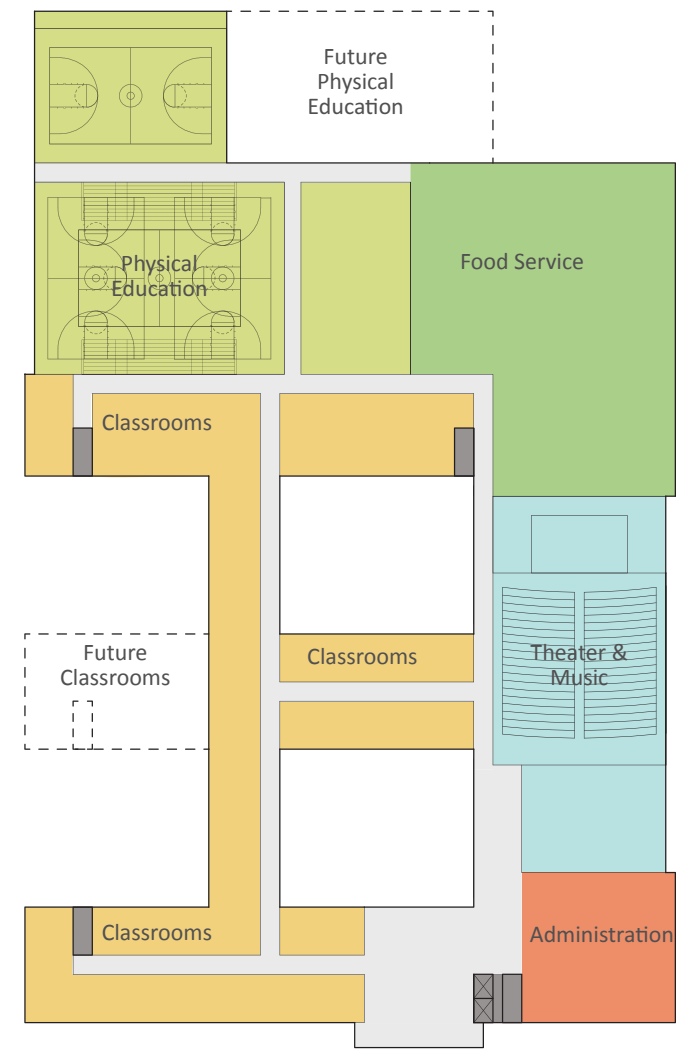
- Construction Area 446,600 GSF
- New Construction
- Renovation Completed
- Parking / Service Area



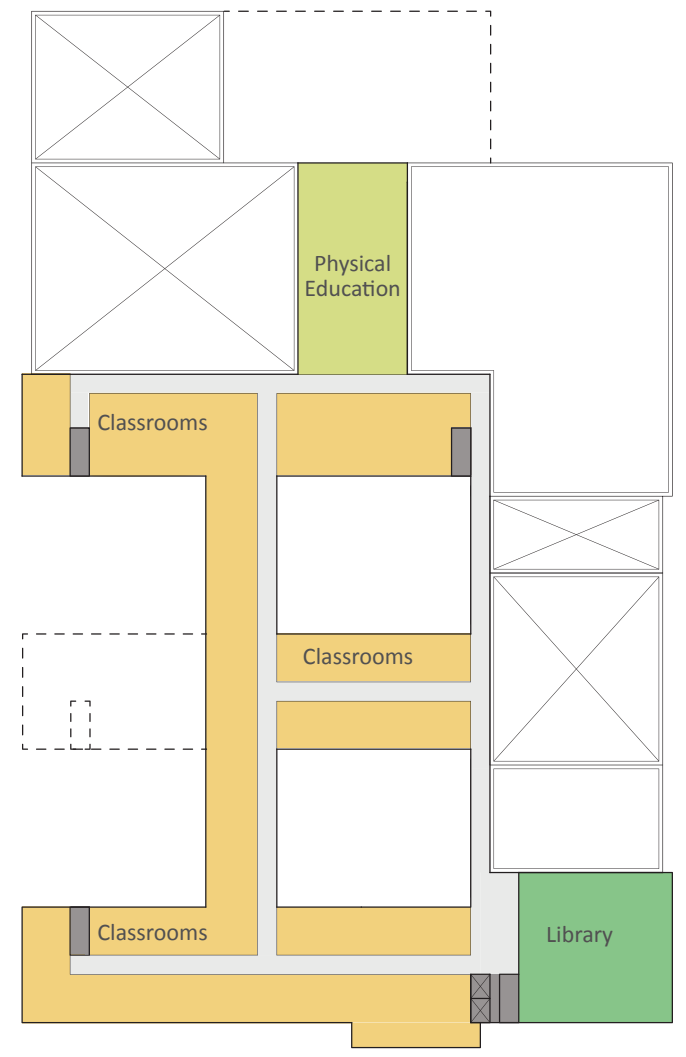


Saxer Avenue Scheme

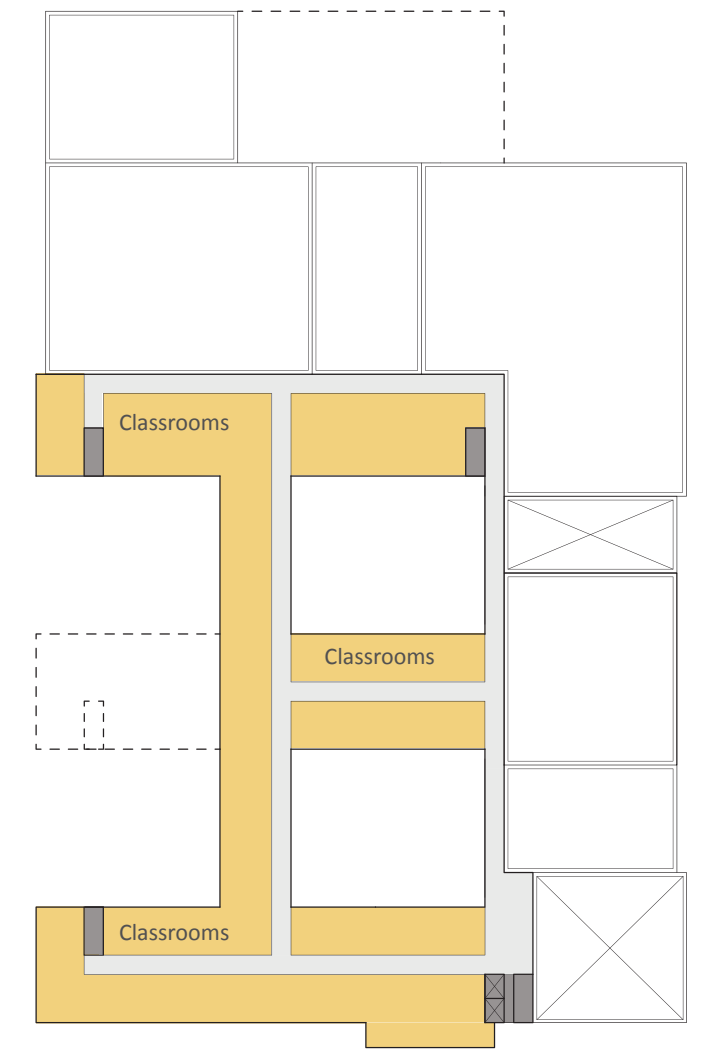
Floor Plans



First Floor



Second Floor



Third Floor

North

- Classrooms
- Theater & Music
- Physical Education
- Food Service
- Administration
- Library
- Corridors
- Stairs / Elevators
- Future Building