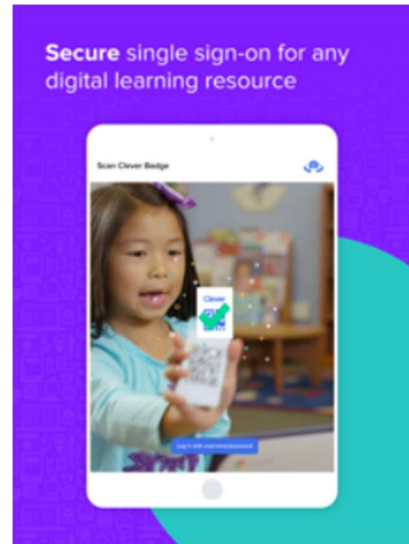
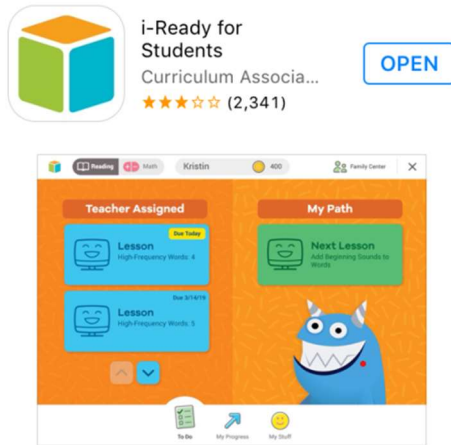
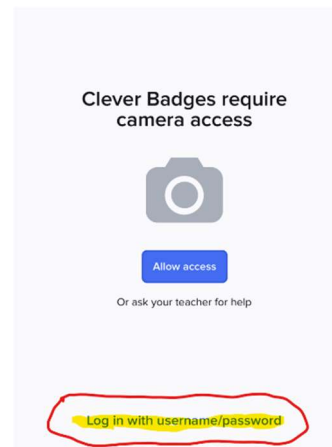


To access i-Ready on an i-Pad

Step 1 – Go to the App store and download the “i-Ready for Students” and “Clever” apps.

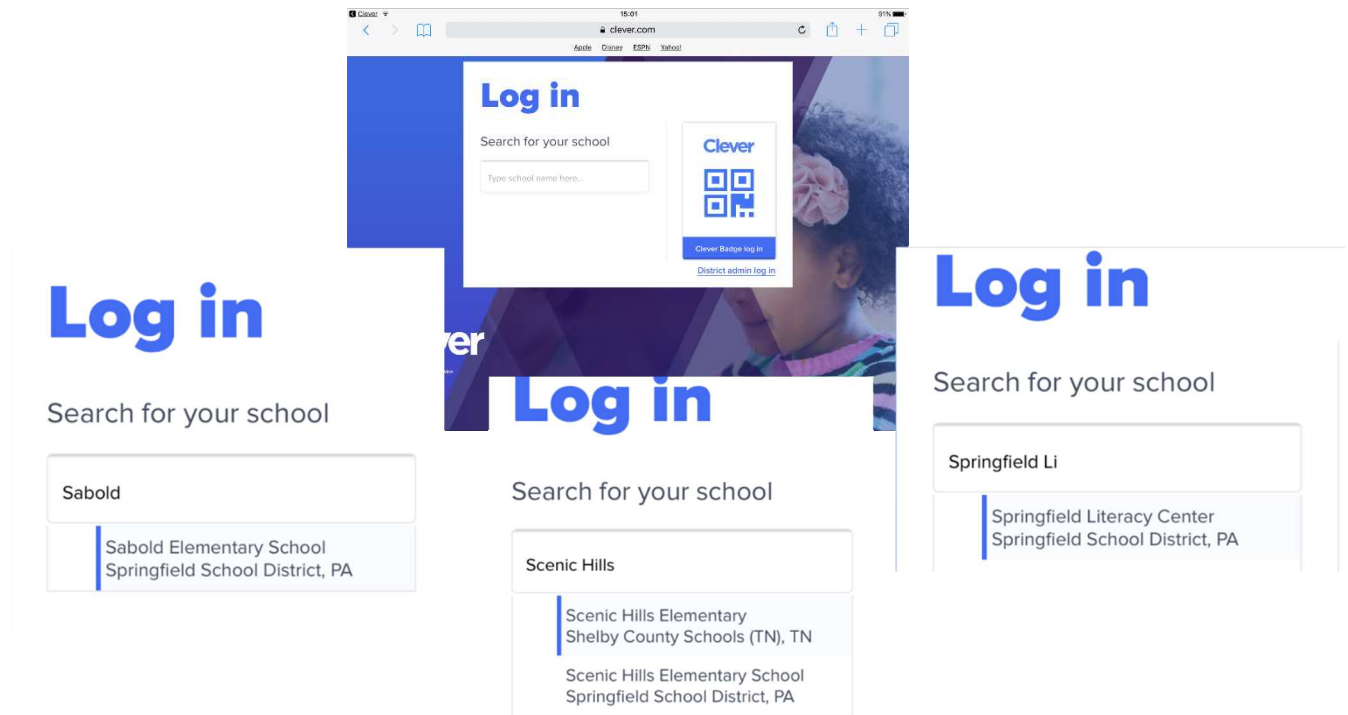


Step 2 – Close the i-Ready App, open the Clever App. When you open the Clever App, it looks as if you need to create a Clever Badge, you do not. Look down to the bottom of the page and click on **Log in with username/password**.



To access i-Ready on an i-Pad

Step 3 - Start typing in the name of your school and when it appears in the list, click on it.



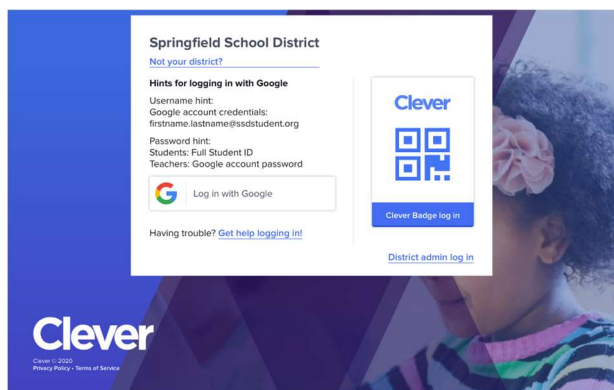
The image shows three overlapping screenshots of the Clever login page. The top screenshot shows the search bar with the text "Type school name here...". The middle screenshot shows search results for "Sabold", listing "Sabold Elementary School Springfield School District, PA". The bottom screenshot shows search results for "Scenic Hills", listing "Scenic Hills Elementary Shelby County Schools (TN), TN" and "Scenic Hills Elementary School Springfield School District, PA".

Step 4 – Log in with Google...



A screenshot of the "Log in with Google" button, featuring the Google logo and the text "Log in with Google".

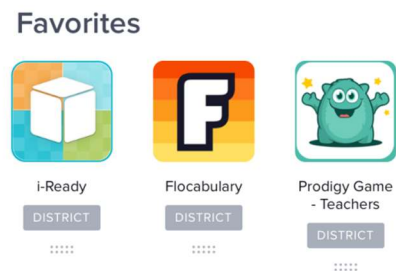
Step 5 – Click on the i-Ready icon...



A screenshot of the Clever login page showing login hints for Google. The text includes "Springfield School District", "Hints for logging in with Google", "Username hint: first.name.last.name@ssdstudent.org", "Password hint: Students: Full Student ID Teachers: Google account password", and a "Log in with Google" button. There is also a "District admin log in" link.



A screenshot of the Clever dashboard header, showing the Clever logo, "Sabold Elementary School", and "Homeroom".



A screenshot of the Clever dashboard showing favorite apps. The "Favorites" section includes "i-Ready", "Flocabulary", and "Prodigy Game - Teachers", each with a "DISTRICT" button and a star icon.